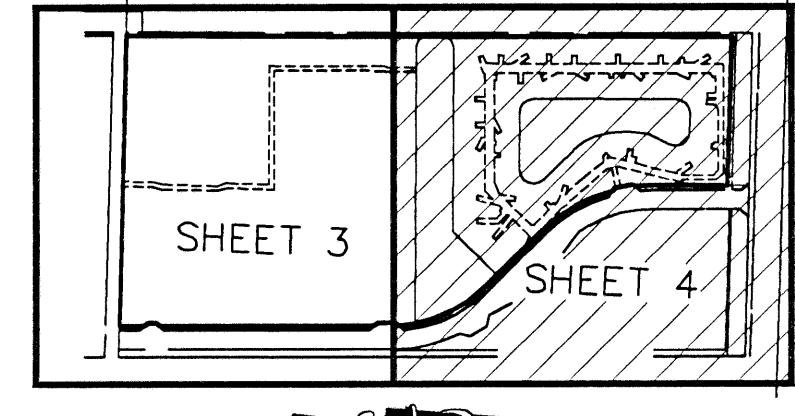


AREA TABULATION		
PARCEL A	694,038 SQUARE FEET	15.933 ACRES
PARCEL B	143,173 SQUARE FEET	3.287 ACRES
PARCEL C	214,049 SQUARE FEET	4.914 ACRES
PARCEL D	1,464,662 SQUARE FEET	33.624 ACRES
TOTAL	2,515,922 SQUARE FEET	57.758 ACRES

MIZNER VILLAGE

A REPLAT OF ALL OF TRACT "A", UPJOHN P.U.D. PLAT ONE, ACCORDING TO THE PLAT THEREOF RECORDED IN PLAT BOOK 86, PAGES 1-3, OF THE PUBLIC RECORDS OF PALM BEACH COUNTY, FLORIDA, LYING IN SECTION 21, TOWNSHIP 46 SOUTH, RANGE 42 EAST, PALM BEACH COUNTY, FLORIDA.



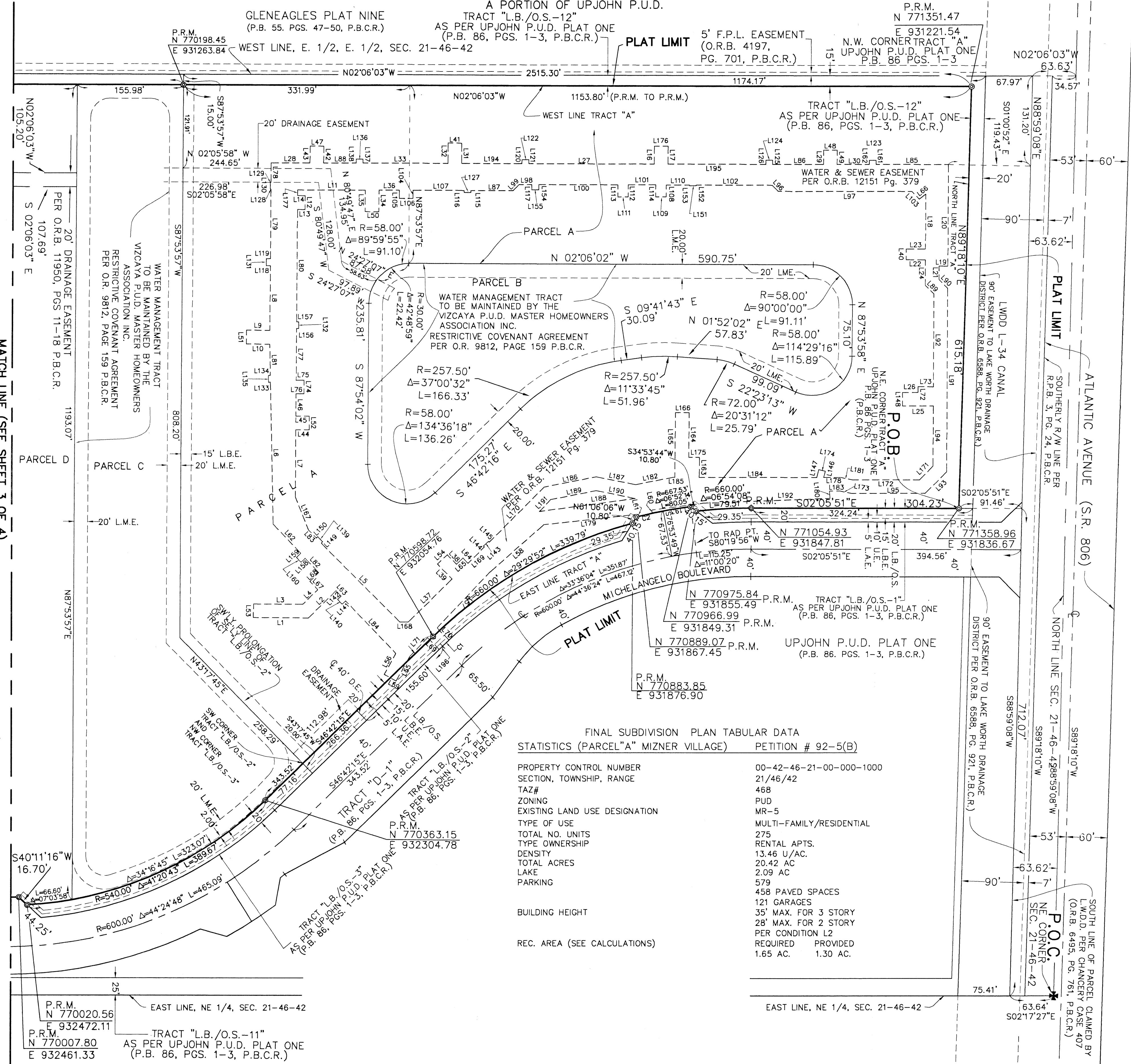
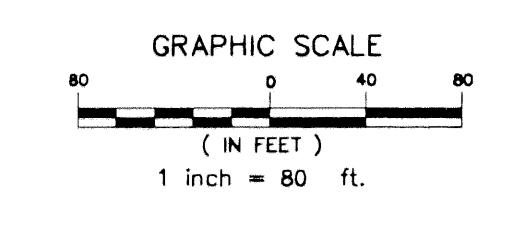
COUNTY OF PALM BEACH
STATE OF FLORIDA

THIS PLAT WAS FILED FOR RECORD AT _____ M. THIS _____ DAY OF _____ AND DULY RECORDED IN PLAT BOOK NO. _____

ON PAGE _____

DOROTHY H. WILKEN,
Clerk Circuit Court

BY: _____ D.C.



LINE TABLE		
LINE	LENGTH	BEARING
L1	80.53	N01°50'06"W
L2	57.26	N46°44'23"W
L3	72.27	N01°49'58"W
L4	31.21	N46°44'23"W
L5	163.96	S42°51'19"W
L6	207.55	S86°27'02"W
L7	98.25	S87°54'54"W
L8	94.41	S87°53'57"W
L9	34.34	N02°05'14"W
L10	34.45	N02°05'14"W
L11	99.32	N02°05'58"W
L12	20.00	S87°54'54"W
L13	11.32	N02°05'08"W
L14	11.32	N02°05'08"W
L16	26.04	S87°58'29"W
L17	26.02	S87°58'29"W
L18	79.89	N87°49'35"E
L19	12.83	S02°10'25"E
L20	147.06	S87°53'57"W
L21	19.04	N87°49'35"E
L22	28.32	N02°09'40"W
L23	28.32	N02°09'40"W
L24	36.55	N87°49'35"E
L25	45.06	N02°09'45"W
L26	22.68	N02°09'45"W
L27	183.49	S02°05'41"E
L28	57.19	S02°06'04"E
L29	20.70	N87°55'30"E
L30	47.08	N02°06'53"W
L31	29.75	N87°55'30"E
L32	29.75	N87°55'30"E
L33	124.13	S02°06'04"E
L34	31.15	S87°55'30"W
L35	31.14	S87°55'30"W
L36	30.06	N02°05'58"W
L37	89.91	S47°08'08"E
L38	19.66	N43°18'04"E
L39	30.76	N43°18'30"E
L40	15.28	N87°58'20"E
L41	20.00	S02°05'45"E
L42	24.80	N87°58'46"E
L43	24.83	N87°58'46"E
L44	19.87	S02°04'59"E
L45	19.77	S02°04'59"E
L46	33.33	S87°54'54"W
L47	20.00	N02°01'14"W
L48	19.92	S02°05'45"E
L49	20.70	N87°55'30"E
L50	20.00	N02°04'30"W
L51	20.00	N88°12'26"E
L52	20.00	N87°37'22"E
L53	20.00	N88°08'50"E
L54	20.00	S45°51'46"E
L55	41.63	N63°23'05"W
L56	35.58	N63°23'05"W
L57	112.95	S49°05'18"E
L58	104.94	N43°35'10"W
L59	20.00	N26°36'55"E
L60	4.55	S77°47'50"W
L61	3.05	S77°47'50"W
L62	58.99	N44°16'23"E
L63	10.50	N44°16'23"E
L64	10.56	S43°40'33"W
L65	13.07	S43°41'59"E
L66	12.08	N39°37'41"W
L67	16.83	N43°15'37"E
L68	18.44	S46°44'23"E
L69	24.07	S43°18'04"W
L70	25.03	S43°18'04"W
L71	37.88	S49°05'18"E
L72	8.50	S87°49'35"W
L73	22.38	S02°10'25"E
L74	20.00	S87°54'54"W
L75	11.89	S02°02'14"E
L76	11.89	S02°02'14"E
L77	75.27	S87°54'54"W
L78	27.98	S87°53'57"W
L79	100.79	S87°53'57"W
L80	163.27	S87°54'54"W
L81	45.92	S86°42'02"W
L82	29.15	N44°16'23"E
L83	16.41	S43°15'37"W
L84	107.03	N44°16'23"E
L85	106.01	N02°06'53"W
L86	74.58	N02°06'53"W
L87	61.86	N02°05'58"W
L88	47.80	S02°06'04"E
L89	17.82	N42°49'35"E
L90	17.82	N42°49'35"E
L91	269.06	N87°49'35"E
L92	136.07	N87°49'35"E
L93	44.29	N47°23'02"W
L94	87.96	N87°49'35"E
L95	107.98	S02°16'32"E
L96	12.67	N42°53'07"E
L97	195.31	N02°05'58"W
L98	19.01	N02°05'58"W
L99	12.67	N47°06'53"W
L100	116.09	N02°05'58"W
L101	40.01	N02°05'58"W
L102	110.55	N02°05'58"W
L103	15.62	N42°49'35"E
L104	11.91	S88°00'18"W
L105	11.88	S88°00'18"W
L106	20.00	S01°59'42"E
L107	74.51	N02°05'58"W
L108	17.55	S87°55'30"W
L109	15.00	N02°04'30"W
L110	33.80	N02°05'58"W

CURVE TABLE		
CURVE	LENGTH	RADIUS
C1	12.98	640.00
C2	20.03	667.53

L111	15.00	S02°07'26"E
L112	17.54	S87°47'41"W
L113	17.55	S87°47'41"W
L114	17.54	S87°55'30"W
L115	2.99	N87°54'02"E
L116	2.99	N87°54'02"E
L117	5.99	N02°06'03"W
L118	5.99	N02°06'03"W
L119	5.99	S87°54'13"W
L120	6.00	S87°54'13"W
L121	6.00	S87°54'13"W
L122	10.00	S02°05'47"E
L123	10.00	N02°06'53"W
L124	10.00	N02°06'53"W
L125	6.06	N87°53'07"E
L126	6.06	N87°53'07"E
L127	10.00	N02°05'58"W
L128	0.98	N02°06'03"W
L129	0.98	N02°06'03"W
L130	10.00	S87°53'57"W
L131	10.00	S87°53'57"W
L132	10.00	S87°54'54"W
L133	2.77	N03°32'58"W
L134	2.77	N03°32'58"W
L135	10.00	S86°27'02"E
L136	10.00	S86°27'02"E
L137	6.00	N87°53'56"E
L138	6.00	N87°53'56"E
L139	10.00	S43°15'37"W
L140	10.00	N44°16'23"E
L141	7.03	N45°43'37"W
L142	7.03	N45°43'37"W
L143	10.00	S46°41'56"E
L144	1.93	S43°17'44"W
L145	1.85	S43°17'44"W
L146	9.70	S78°35'24"E
L147	12.11	S78°35'24"E
L148	20.00	N87°50'15"E
L149	3.01	S46°44'23"E
L150	3.01	S46°44'23"E
L151	10.00	N02°05'58"W
L152	1.15	N87°54'02"E
L153	1.15	N87°54'02"E
L154	7.58	N87°54'02"E
L155	10.00	N02°05'58"W
L156	2.96	S02°05'06"E
L157	2.96	S02°05'06"E
L158	8.61	N45°43'37"W
L159	8.61	N45°43'37"W
L160	10.00	N44°16'23"E
L161	5.95	N87°53'57"E
L162	5.95	N87°53'57"E
L163	29.20	S88°13'58"W
L164	65.13	S88°07'10"W
L165	94.54	S88°07'10"W
L166	20.00	N01°52'50"W
L167	52.12	N65°25'29"E
L168	12.11	S02°05'06"E
L169	33.75	S47°08'08"E
L170	114.53	S47°08'08"E
L171	27.99	S47°23'02"E
L172	98.48	S02°10'25"E
L173	17.72	S08°47'39"W
L174	10.00	S11°24'36"W
L175	15.59	N01°46'02"W
L176	20.00	N02°01'31"W
L177	8.27	S87°54'54"W
L178	24.98	S02°10'25"E
L179	139.40	S08°34'34"E
L180	10.62	S83°15'25"W
L181	17.28	S09°04'35"W
L182	55.79	S12°3'08"E
L183	15.05	S02°10'25"E
L184	171.13	S02°10'25"E
L185	2.13	S02°10'25"E
L186	77.38	S12°3'08"E
L187	58.31	S09°52'52"W
L188	141.72	S09°52'52"W
L189	67.34	S12°3'08"E
L190	58.00	S09°06'52"W
L191	24.71	S47°08'08"E
L192	184.34	S04°24'49"E
L193	75.95	S09°52'52"W
L194	88.97	S02°06'11"E
L195	142.00	S02°04'59"E
L196	7.02	N46°42'15"W

FINAL SUBDIVISION PLAN TABULAR DATA
STATISTICS (PARCEL "A" MIZNER VILLAGE) PETITION # 92-5(B)

PROPERTY CONTROL NUMBER	00-42-46-21-00-000-1000
SECTION, TOWNSHIP, RANGE	21/46/42
TAZ#	468
ZONING	PUD
EXISTING LAND USE DESIGNATION	MR-5
TYPE OF USE	MULTI-FAMILY/RESIDENTIAL
TOTAL NO. UNITS	275
RENTAL APTS.	13.46 U/A.C.
DENSITY	20.42 AC
TOTAL ACRES	2.09 AC
LAKE	579
PARKING	458 PAVED SPACES 121 GARAGES
BUILDING HEIGHT	35' MAX. FOR 3 STORY 28' MAX. FOR 2 STORY
PER CONDITION L2	REQUIRED PROVIDED
REC. AREA (SEE CALCULATIONS)	1.65 AC. 1.30 AC.

LEGEND:
P.O.C. = POINT OF COMMENCEMENT
P.O.B. = POINT OF BEGINNING
P.B. = PLAT BOOK
PG. = PAGE
PGS. = PAGES
O.R.B. = OFFICIAL RECORDS BOOK
P.B.C.R. = PALM BEACH COUNTY RECORDS
C = CENTER LINE
R = RADIUS
Δ = CENTRAL ANGLE
L = ARC LENGTH
L.W.D.D. = LAKE WORTH DRAINAGE DISTRICT
R.P.B. = ROAD PLAT BOOK
U.E. = UTILITY EASEMENT
L.A.E. = LIMITED ACCESS EASEMENT
L.B.E. = LANDSCAPE BUFFER EASEMENT
L.B./O.S. = LANDSCAPE BUFFER/OPEN SPACE
M = PERMANENT REFERENCE MONUMENT
L.M.E. = LAKE MAINTENANCE EASEMENT
RAD PT. = RADIUS POINT

SUBDIVISION MIZNER VILLAGE
BOOK 89 PAGE 173
PLAT-D ZONE B
QUAD #52
SE
TAZ 468
PUD NAME UPJOHN PUD

MILLER LEGG
ASSOCIATES, INC.
Main Office: 1800 N. Douglas Road, Suite 200
Pompano Beach, Florida 33062-5020
(954) 786-7000 Fax: (954) 458-8884

Palm Beach Regional Office: 1300 Corporate Center Way, Suite 203
Wellington, Florida 33414-6920
(407) 796-9888 Fax: (407) 795-9408

Orlando Office: 57 North Orange Avenue, Suite 305
Orlando, Florida 32801
(407) 828-4122 Fax: (407) 828-4123